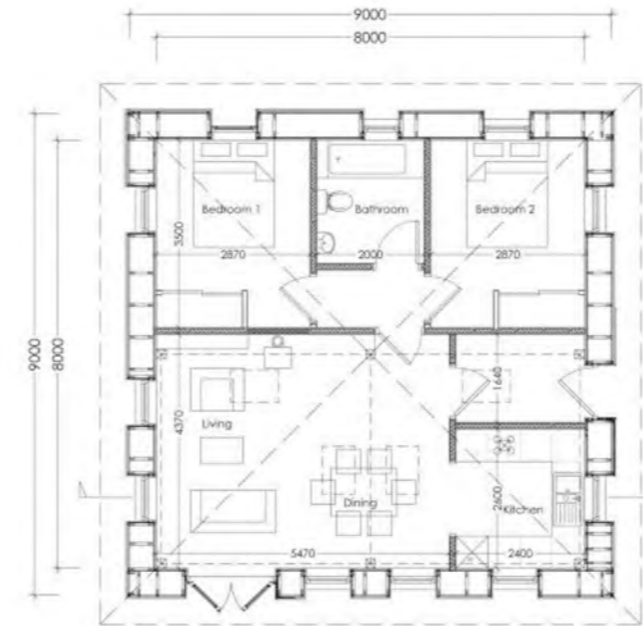




Roderick James Architects LLP



examples of our work

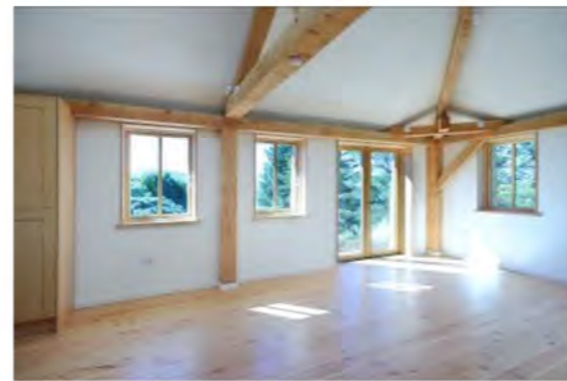


**Specification as shown:**

- External Walls tapered from 300 to 450mm, fully filled with Warmcel recycled newspapers (collected by local schoolchildren) 0.11 u-value.
- Home-grown Larch cladding ship-lapped, rough plaster finish internally.
- Timber framed, alu-clad double glazed windows.
- Wood burning stove, solar thermal panels, electric UFH with thermal slab as night storage heater running on off-peak electricity.
- Home grown Douglas Fir frame to main living space.

**Concept:**

Super-insulate to better than Passiv Haus standards, then meet the reduced energy demand with simple, cheap, low maintenance technology.



# The Fair and Square House

Location : Achabeag, Ardtornish Estate, Lochaline  
Morvern, near Fort William. PA80 5XU

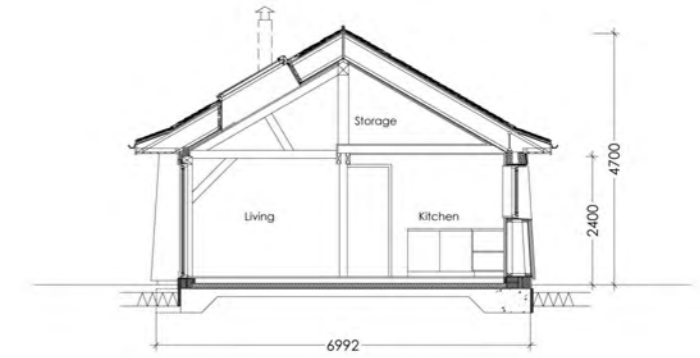
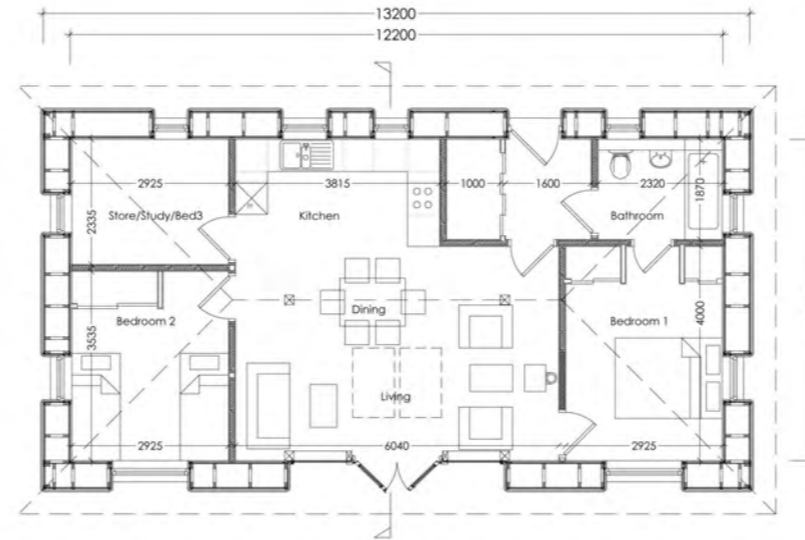
[www.achabeag.co.uk](http://www.achabeag.co.uk)



Roderick James Architects LLP



examples of our work



Specification as shown:

External Walls tapered from 300 to 450mm, fully filled with Warmcel recycled newspapers (collected by local schoolchildren) 0.11 u-value.

White wet dash render finish, home-grown Douglas Fir lining internally.

Timber framed, alu-clad double glazed windows.

Wood burning stove, solar thermal panels, electric UFH with thermal slab as night storage heater running on off-peak electricity.

Home grown Douglas Fir frame to main living space.

Concept:

Super-insulate to better than Passiv Haus standards, then meet the reduced energy demand with simple, cheap, low maintenance technology.



# The Croft House

Location : Achabeag, Ardtornish Estate, Lochaline

Morvern, near Fort William. PA80 5XU

[www.achabeag.co.uk](http://www.achabeag.co.uk)